

# DATAVAN ARC-615W

EPOS designed to impress



**crystal  
epos**  
the clear  
retail solution

Customer  
empowerment  
with breakthrough  
technology



Choose from Black or White models.



MSR & iButton/Fingerprint/RFID



10" Customer Facing Display



2 Line VFD Customer Facing Display

01484 240888 / 07977 000282

[www.crystal-epos.co.uk](http://www.crystal-epos.co.uk)

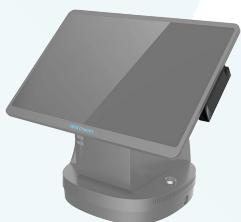
# DATAVAN ARC-615W

## Specification

All Specifications and Photos are subject to change without notice

<b>System</b>	Model	ARC-615W
	CPU	Intel® Celeron® J1900 up to 2.4GHz (Quad-core, fanless)
	Main Memory	204Pin DDR3L RAM*1 slot, max. 8GB
<b>Storage</b>	HDD	1 x 2.5" SATA hard drive (HDD) or 1 x 2.5" SATA solid state drive (SSD)
<b>Display</b>	LCD Panel	15.6" LED backlight display
	Max. Resolution	1366*768 (default)
	Touch Screen	Bezel-free Projected Capacitive
<b>Connectivity</b>	USB2.0	5
	USB3.0	2
	DB9 COM	2
	Gigabit Ethernet	1
	HDMI	1
	RJ12 Cash Drawer	1(OPOS driver, Dual cash drawer support, 12V/24V selectable)
	DC in	1
<b>Powering System</b>	Powering System	External DC power adapter. AC100 to 240V full range.
	Power Button	1 x System on/off trigger
<b>Mechanical &amp; Environmental</b>	Case Color	Main Unit: Black or White
	Material	Die-casting + Plastic
	System Dimension	L368*W399*D252mm (system only) L368*W407*D267mm (with integrated printer)
	Weight	6.6Kg
	Operating Temperature	0°C~40°C
	Storage Temperature	-25°C~70°C
	Certification	CE/FCC/CB/CCC/LVD certificated
<b>Miscellaneous</b>	Power Supply	External DC power adapter. AC100 to 240V full range.
	OS Support	Windows 7/ POSReady 7/ Window 8.1 Industry/ Windows 10 IoT Enterprise/ Linux Kernel 3.0 or above

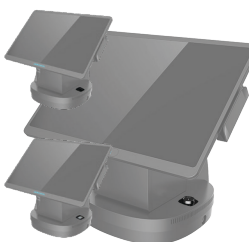
## Optional Extras



MSR



10" or 2 Line VFD Customer Facing Displays



iButton/Fingerprint/RFID Scanners



Thermal Printer